

Prestid Standard  
US Postage Paid  
Pasadena, CA  
Permit No. 648

Los Angeles Radiological Society

## SUMMER SEMINAR IN BREAST IMAGING

*Saturday, July 18, 2009*

### Hilton Pasadena

168 S. Los Robles Avenue

Pasadena, CA 91101

This conference is designed to fit the continuing education needs of Radiologists, Mammographers, and Mammography Technologists who order, perform, and interpret Mammographic Studies



Tel: 626-836-5800  
Fax: 626-836-6606  
Email: [lars@larad.org](mailto:lars@larad.org)  
Web: [www.larad.org](http://www.larad.org)

**LARS**  
LOS ANGELES RADIOLOGICAL SOCIETY

PO Box 93125  
Pasadena, CA 91109

### Faculty and Learning Objectives

**Debra Ikeda, MD**

**Director, Breast Imaging, Stanford Comprehensive Cancer Center**

*At the end of Dr. Ikeda's lectures, the attendee will understand the advantages and limitations of mammography and MRI in DCIS and will identify key elements in diagnosing DCIS on MRI. Attendees will understand mechanisms of MRI contrast enhancement in cancer and will correlate mammography, US and MRI findings in cancer and benign disease.*

**Valerie P. Jackson, MD, FACR**

**John A. Campbell Professor and Chair of Radiology, Indiana University School of Medicine**

*At the end of Dr. Jackson's lectures the attendee will be able to describe breast masses and mammographic abnormalities using ACR BI-RADS® terminology and to discuss appropriate management and workup. The attendee will identify breast lesions appropriate for recall from screening and will be able to describe appropriate recall rates and strategies to minimize unnecessary recalls.*

**Jessica W.T. Leung, MD**

**Medical Director, Breast Health Center, California Pacific Medical Center  
Associate Clinical Professor of Radiology, UC San Francisco Medical Center**

*At the end of Dr. Leung's lectures, the attendee will be able to analyze the benefits, harms, and costs of various breast cancer screening modalities and derive evidence-based methods for implementing an optimal breast cancer screening program; be able to recognize and evaluate challenging mammographic lesions including asymmetries and architectural distortion; be able to understand and evaluate the current published data on management controversies after core diagnoses of high-risk lesions (including papilloma, lobular neoplasia, radial scar) and draw evidence-based conclusions for appropriate management after benign concordant diagnoses at core breast biopsy.*

**Diane Rinella RT(R)(M)(BD) RDMS(BR) CDT**

**Breast Imaging Specialist / Mammography Consultant**

*At the end of Ms. Rinella's lectures, the attendee will recognize the indicators of suboptimal mammography positioning for various diagnostic views and will utilize techniques for optimal tissue visualization; understand the importance of breast US as an adjunct to mammography and be current with published studies on the topic; know the basics of Breast US as well as the technologist's requirements for becoming certified in breast US; recognize the potential sources of stress within the mammography department, describe the various stress symptoms, and utilize techniques for stress reduction.*

### Program Planners

**Denise M. Andrews-Tang, MD**

Assistant Professor of Radiological Sciences  
David Geffen School of Medicine at UCLA

**Guita Rahbar, MD**

Associate Professor of Radiological Sciences  
David Geffen School of Medicine at UCLA

## Program Information

Register securely online with MasterCard or Visa at [www.larad.org](http://www.larad.org)

Complete and fax or mail registration form to LARS. Payment must accompany registration. MasterCard, Visa or check payable to LARS are accepted.

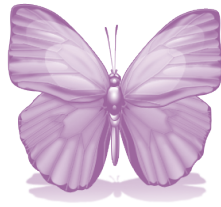
Confirmation of registration and receipt will be sent by email.

Advance registration must be received by 5:00pm July 13, 2009.

Cancellations must be made in writing and received no later than 5:00pm July 13. No cancellations will be accepted after July 13, 2009. A \$20 cancellation fee will be applied. Refunds will be made after the conference.

### Food and Beverage

A continental breakfast of pastries, coffee and tea will be available 7:30am-8:00am. Coffee and tea will be served during breaks with the addition of cookies in the afternoon. A hosted luncheon with Question and Answer Panel will be served at 12:15pm.



### Location and Parking

Hilton Pasadena  
168 S. Los Robles  
Pasadena, CA 91101  
626-577-1000

Valet parking is available at the Hilton for \$10 with no in-and-out privileges. Overnight valet parking is \$21.

## Program

Speaker	Time	Lectures
<b>Plenary Session—International Ballroom</b>		
Dr. Jackson	8:00am- 8:45am	Evaluation of Breast Masses
	8:45am-9:30am	Recall or Not to Recall: That is the Question
Break	9:30am-10:00am	Visit Exhibit Hall in California Ballroom
Dr. Leung	10:00am-10:45am	Breast Cancer Screening Controversies
	10:45am-11:30am	Challenging Breast Lesions: To Follow or to Biopsy
Dr. Jackson	11:30am-12:15pm	Challenging Case Reviews
Luncheon	12:15pm-1:15pm	Question and Answer Panel—California Ballroom
<b>Concurrent Sessions</b>		
<b>Technologist Breakout</b> East International Ballroom		
Ms. Rinella	1:15pm-1:45pm	Improving Diagnostic Mammography Positioning
	1:45pm-2:15pm	Breast Ultrasound for the Mammography Technologist
	2:15pm-2:45pm	Stress Management for the Mammography Technologist
<b>Physician Breakout</b> West International Ballroom		
Dr. Ikeda	1:15pm-2:00pm	Breast MRI Interpretation Made Simple
	2:00pm-2:45pm	DCIS on MRI and Digital Mammography
Break	2:45pm-3:15pm	Visit Exhibit Hall in California Ballroom
<b>Plenary Session Resumes—International Ballroom</b>		
Dr. Leung	3:15pm-4:00pm	Breast Core Biopsy: Management after Benign Concordant Diagnosis
Dr. Ikeda	4:00pm-4:45pm	Challenging Multimodality Cases on Mammo / MRI / US

**Accreditation:** The Los Angeles Radiological Society (LARS) is accredited by the Institute for Medical Quality/California Medical Association (IMQ/CMA) to provide continuing medical education for physicians. LARS takes responsibility for the content, quality and scientific integrity of this CME activity.

LARS designates this educational activity for a maximum of 7.25 AMA PRA Category 1 Credits™. Physicians should only claim credit commensurate with the extent of their participation in the activity. This credit may also be applied to the CMA Certification in Continuing Medical Education.

**Mammographers:** This program has been submitted to the ASRT for Category A credits, accepted by ARRT and ARDMS. Check the LARS website, [www.larad.org](http://www.larad.org), for approval updates.

## Registration

Circle the Appropriate Registration

	LARS Member	Non-Member
Physician	\$200	\$250
Technologist	\$165	\$200
Resident/Fellow	\$75	\$165

Name & Suffix (for badge)

Hospital or Group Affiliation (for badge)

Mailing Address

City, State, Zip

Email: Required for your confirmation and receipt

### Method of Payment

MCard  Visa  Check #

Credit Card # (please print clearly—16 numbers)

Expiration Date

3 Digit Security code

Signature

PO Box 93125  
Pasadena, CA 91109

Phone: 626-836-5800  
Fax: 626-836-6606  
E-mail: [lars@larad.org](mailto:lars@larad.org)

