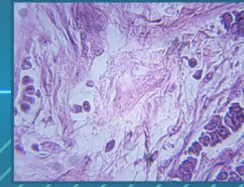
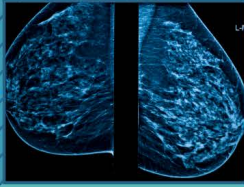


Current Concepts in Breast Imaging



Program Chair

Nina Capiro, MD

UCLA

LARS Breast Imaging Representative

Program Co-Chair

Reza Fardanesh, MD

UCLA

LARS Breast Imaging Junior Representative

Lecture	Speaker
Appropriate Usage of BI-RADS 3	Victoria Mango, MD, FSBI
Alternatives to Pre-Operative Wire Localization: Recent Technological Advances	Victoria Mango, MD, FSBI
Fundamentals and Future of Contrast-Enhanced Mammography	Kristen Coffey, MD
Q&A Session Moderator: Reza Fardanesh, MD	
Breast Biopsy Tips and Tricks	Laura Doepke, MD
Treatment of Breast Cancer in Young Women	Farnaz Haji, DO, MS
CA Law SB1419 Implication on Imaging Results Release and Utilizing NLP/AI Approaches	Lucy Chow, MD
Q&A Session Moderator: Reza Fardanesh, MD	
Uncommon Diseases of the Breast	Mollie Rashid, MD
Evaluation and Management of the Axilla in Breast Cancer Patients	Tejas Manchandia, MD
The Male Breast	Nooshin Najmi, MD
Q&A Session Moderator: Nina Capiro, MD	
Breast AI	William Hsu, PhD
High Risk Breast Clinic	Aashini Master, DO
Looks Can be Deceiving. Breast calcifications. Review of Morphology and Pathology	Mariam Thomas, MD
Q&A Session Moderator: Nina Capiro, MD	

Faculty

Lucy Chow, MD

Assistant Clinical Professor, Physician Informaticist
UCLA Health, Radiology
Los Angeles, CA

Kristen Coffey, MD

Assistant Attending Radiologist, Breast Fellowship
Co-Director
Memorial Sloan Kettering Cancer Center
New York NY

Laura Doepke, MD

Associate Member Diagnostic Radiology, Breast
Imaging
Moffitt Cancer Center
Tampa, Florida

Farnaz Haji, DO, MS

Assistant Clinical Professor
UCLA Surgical Oncology
Santa Barbara, CA

William Hsu, PhD

Associate Professor of Radiological Sciences
David Geffen School of Medicine at UCLA
Los Angeles, CA

Tejas Manchandia, MD

Assistant Clinical Professor
UCLA Health
Westlake Village, CA

Victoria Mango, MD, FSBI

Associate Attending Radiologist
Memorial Sloan Kettering Cancer Center
New York, NY

Aashini Master, DO

UCLA
Santa Monica, CA

Nooshin Najmi, MD

Assistant Professor
UCLA Health
Los Angeles, CA

Mollie Rashid, MD

Assistant Clinical Professor
UCLA
Los Angeles, CA

Mariam Thomas, MD

Professor of Radiological Sciences David Geffen
School of Medicine at UCLA, Vice-Chair of Clinical
Research at Olive View-UCLA Medical Center
Olive View-UCLA Medical Center
Los Angeles, CA

Disclosures

In accordance with ACCME's Standards for Integrity and Independence, the Los Angeles Radiological Society adheres to guidelines and processes to identify and mitigate relevant financial relationships. All relevant financial disclosures will be made available in the conference materials. In addition to written disclosure, presenters will disclose any intention to discuss off-label use of pharmaceuticals or devices in their presentation(s). All relevant disclosures have been mitigated and are disclosed in the activity.

Designation Statement

The Los Angeles Radiological Society designates this enduring internet activity for a maximum of 7.0 *AMA PRA Category 1 Credits™*. Physicians should claim only the credit commensurate with the extent of their participation in the activity.

Accreditation Statement

The Los Angeles Radiological Society is accredited by the California Medical Association (CMA) to provide continuing medical education for physicians.